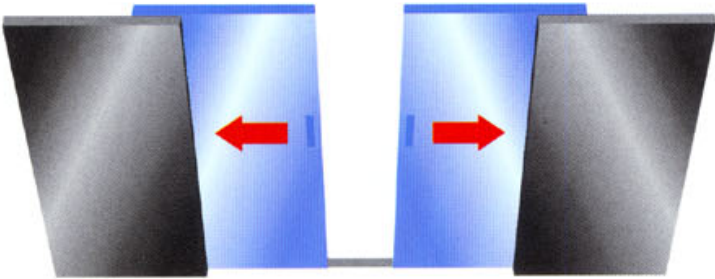
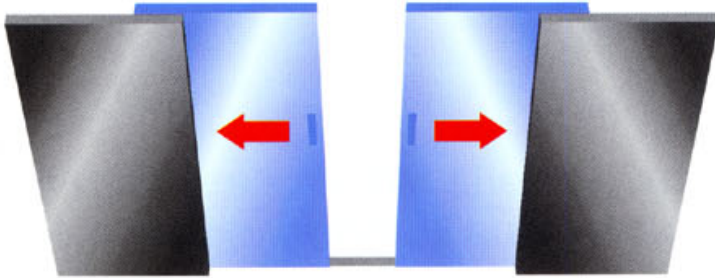
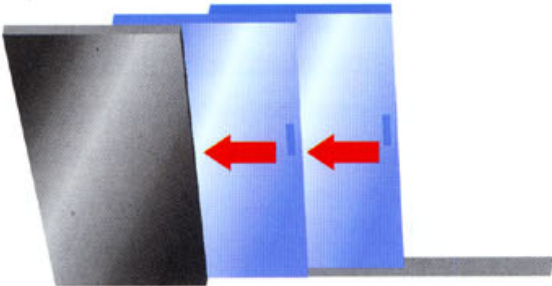
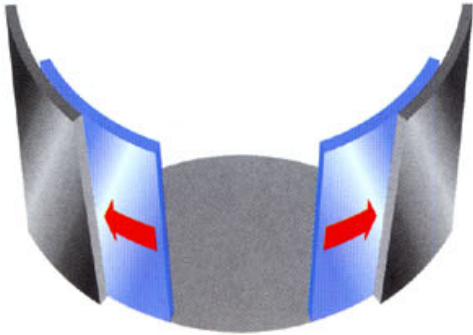


AUTOMATIC DOOR OPERATOR

MODEL & CHARACTERISTIC

TYPE OF DOOR	DESCRIPTION
<p>SLIDING DOOR-RB TYPE(CONCEALED MOUNT) / RC TYPE(SURFACE MOUNT)</p> 	<p>MAXIMUM DOOR WEIGHT</p> <p>OPENING SPEED</p> <p>CLOSING SPEED</p> <p>DAMPING SPEED</p> <p>HOLD OPEN TIME</p> <p>POWER/VOLTAGE</p> <p>INSULATION RESISTANCE (MOTOR)</p> <p>DIELECTRIC STRENGTH (MOTOR)</p> <p>POWER CONSUMPTION</p> <p>TEMPERATURE RANGE</p> <p>MANUAL OPENING/CLOSING FORCE</p> <p>MAXIMUM DOOR STROKE</p> <p>MOTOR</p> <p>DRIVING</p>
<p>SLIDING DOOR-RE TYPE</p> 	<p>MAXIMUM DOOR WEIGHT</p> <p>OPENING SPEED</p> <p>CLOSING SPEED</p> <p>DAMPING SPEED</p> <p>HOLD OPEN TIME</p> <p>POWER/VOLTAGE</p> <p>INSULATION RESISTANCE (MOTOR)</p> <p>DIELECTRIC STRENGTH (MOTOR)</p> <p>POWER CONSUMPTION</p> <p>TEMPERATURE RANGE</p> <p>MANUAL OPENING/CLOSING FORCE</p> <p>MAXIMUM DOOR STROKE</p> <p>MOTOR</p> <p>DRIVING</p>
<p>DOUBLE SLIDING TELESCOPIA DOOR-RN TYPE</p> 	<p>MAXIMUM DOOR WEIGHT</p> <p>OPENING SPEED</p> <p>CLOSING SPEED</p> <p>DAMPING SPEED</p> <p>HOLD OPEN TIME</p> <p>POWER/VOLTAGE</p> <p>INSULATION RESISTANCE (MOTOR)</p> <p>DIELECTRIC STRENGTH (MOTOR)</p> <p>POWER CONSUMPTION</p> <p>TEMPERATURE RANGE</p> <p>MANUAL OPENING/CLOSING FORCE</p> <p>MAXIMUM DOOR STROKE</p> <p>MOTOR</p> <p>DRIVING</p>
<p>ROUND DOOR-RR TYPE</p> 	<p>MAXIMUM DOOR WEIGHT</p> <p>OPENING SPEED</p> <p>CLOSING SPEED</p> <p>DAMPING SPEED</p> <p>HOLD OPEN TIME</p> <p>POWER/VOLTAGE</p> <p>INSULATION RESISTANCE (MOTOR)</p> <p>DIELECTRIC STRENGTH (MOTOR)</p> <p>POWER CONSUMPTION</p> <p>TEMPERATURE RANGE</p> <p>MANUAL OPENING/CLOSING FORCE</p> <p>MAXIMUM DOOR STROKE</p> <p>MOTOR</p> <p>DRIVING</p>

HOW TO SPECIFY RYOBI AUTOMATIC DOOR OPERATOR

R ① ② ③ ④ ⑤ ⑥ ⑦

- ① **TYPE OF DOOR**
 B: CONCEALED MOUNT SLIDING DOOR
 C: SURFACE MOUNT SLIDING DOOR
 E: SURFACE MOUNT SLIDING DOOR
 R: ROUND DOOR
 N: DOUBLE SLIDING TELESCOPIA DOOR
- ② **TYPE OF CONTROL MOTOR**
 15T: MEDIUM DUTY
 22T: HEAVY DUTY
- ③ **TYPE OF CONTROL BOX**
 15N: MEDIUM DUTY
 22N: HEAVY DUTY
- ④ **LEAF OF DOOR/HAND OF DOOR**
 D: DOUBLE DOORS (BI-PARTING DOORS)
 R: RIGHT HAND (IN CASE OF SINGLE/ONE DIRECTION DOOR)
 L: LEFT HAND (IN CASE OF SINGLE/ONE DIRECTION DOOR)
- ⑤ **END COVER (FOR RC/RE/RN TYPE)**
 S: WITH END COVER (SILVER)
 O: WITHOUT END COVER
CORNER PIECE (FOR RB TYPE)
 P: WITH CORNER PIECE
 O: WITHOUT CORNER PIECE
TYPE OF BENT (FOR RR TYPE)
 O: STANDARD BENT
 U: REVERSE BENT
- ⑥ **LENGTH OF BASE (FOR RB/RC/RE/RN TYPE)**
 L0: WITHOUT BASE
 L2000: LENGTH=2000
 L4000: LENGTH=4000
RADIUS OF BENT (FOR RR TYPE)
 R1200: RADIUS=1200MM
 R1500: RADIUS=1500MM
 *OPTIONAL DIMENSIONS IN RADIUS IS AVAILABLE AT
 ADDITIONAL COST.
- ⑦ **DOOR WIDTH (FOR RE/RN TYPE ONLY)**
 DW900: DOOR WIDTH=900MM
 *REFER TO THE CHART BELOW FOR MINIMUM DOOR WIDTH

TYPE	MIN. DOOR WIDTH
RB/RC TYPE	630MM
RE TYPE	700MM
RN TYPE	520MM

EXAMPLE

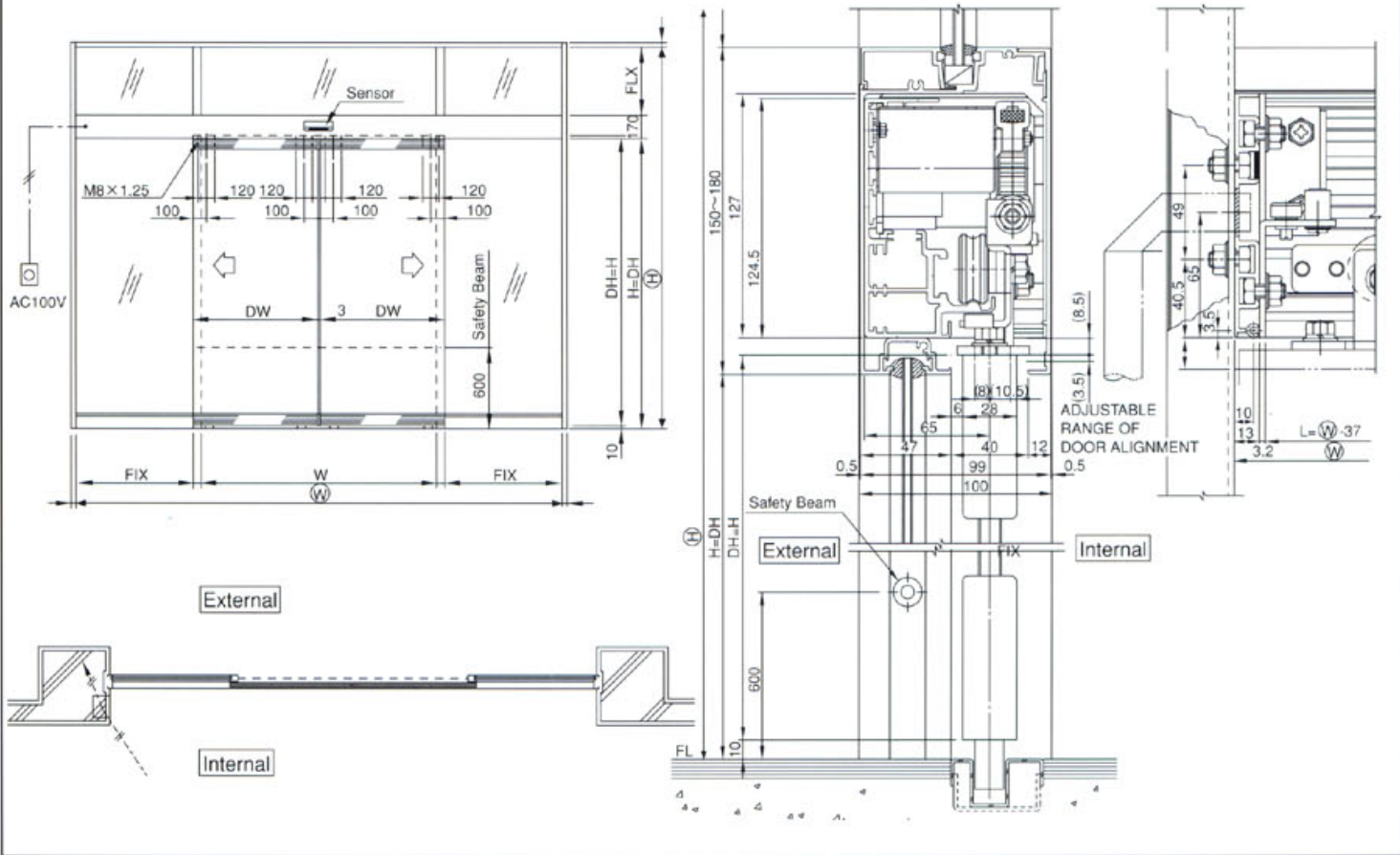
- RB TYPE: RB15T15NDPL4000
 CONCEALED MOUNT/ MEDIUM DUTY/DOUBLE
 DOORS/ WITH END COVER/LENGTH=4000
- RC TYPE: RC15T15NDOL4000
 SURFACE MOUNT/ MEDIUM DUTY/DOUBLE
 DOORS/ WITHOUT END COVER/LENGTH=4000
- RE TYPE: RE15T15NLSL4000DW800
 CONCEALED MOUNT/ MEDIUM DUTY/SINGLE DOOR/
 LEFT HAND/WITH END COVER/L=4000/DW=850
- RN TYPE: RN22T22NDSL4000DW850
 TELESCOPIA MOUNT/HEAVY DUTY/DOUBLE
 SLIDING DOOR/WITH END COVER/L=4000/DW=850
- RR TYPE: RR22T22NDUR1500
 ROUND DOOR/HEAVY DUTY/DOUBLE DOORS/
 REVERSE BENT/R=1500

HEAVY DUTY		MEDIUM DUTY	
SINGLE DOOR	DOUBLE DOORS	SINGLE DOOR	DOUBLE DOORS
150KG × 1	110KG × 2	100KG × 1	75KG × 2
100-550MM/SEC.		350MM OR 550MM/SEC.	
100-550MM/SEC.		100-550MM/SEC.	
35-100MM/SEC.		35MM OR 60MM/SEC.	
0-10 SEC.		0-10 SEC.	
AC100V±10% 3A		AC100V±10% 3A	
DC500V 100MΩ		DC500V 100MΩ	
AC1500V 1MIN.		AC1500V 1MIN.	
50W		20W	
-10°C - 40°C		-10°C - 40°C	
LESS THAN 3KGF		LESS THAN 3KGF	
10M		10M	
BRUSHLESS DC MOTOR		BRUSHLESS DC MOTOR	
TIMING BELT		TIMING BELT	
N/A		MEDIUM DUTY	
		SINGLE DOOR	DOUBLE DOORS
		100KG × 1	75KG × 2
		350MM OR 550MM/SEC.	
		100-550MM/SEC.	
		35MM OR 60MM/SEC.	
		0-10 SEC.	
		AC100V±10% 3A	
		DC500V 100MΩ	
		AC1500V 1MIN.	
		20W	
		-10°C - 40°C	
		LESS THAN 3KGF	
10M			
BRUSHLESS DC MOTOR			
TIMING BELT			
HEAVY DUTY		N/A	
ONE DIRECTION	BI-PARTING		
100KG × 2	75KG × 4		
100-550MM/SEC.			
100-550MM/SEC.			
35-100MM/SEC.			
0-10 SEC.			
AC100V±10% 3A			
DC500V 100MΩ			
AC1500V 1MIN.			
50W			
-10°C - 40°C			
LESS THAN 3KGF			
10M			
BRUSHLESS DC MOTOR			
TIMING BELT			
HEAVY DUTY		N/A	
SINGLE DOOR	DOUBLE DOORS		
150KG × 1	110KG × 2		
100-550MM/SEC.			
100-550MM/SEC.			
35-100MM/SEC.			
0-10 SEC.			
AC100V±10% 3A			
DC500V 100MΩ			
AC1500V 1MIN.			
50W			
-10°C - 40°C			
LESS THAN 3KGF			
10M			
BRUSHLESS DC MOTOR			
TIMING BELT			

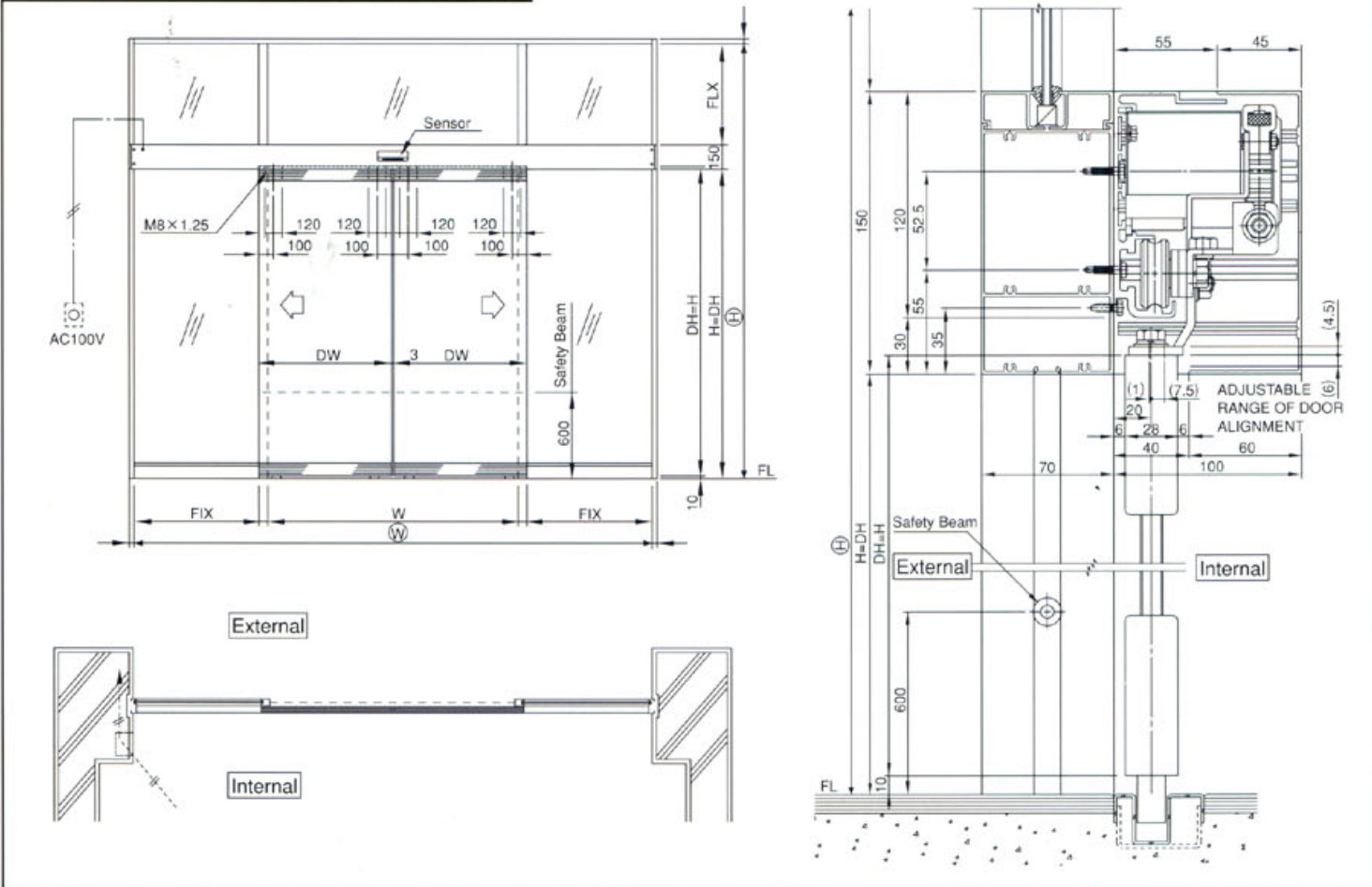
AUTOMATIC DOOR OPERATOR

INSTALLATION DRAWING

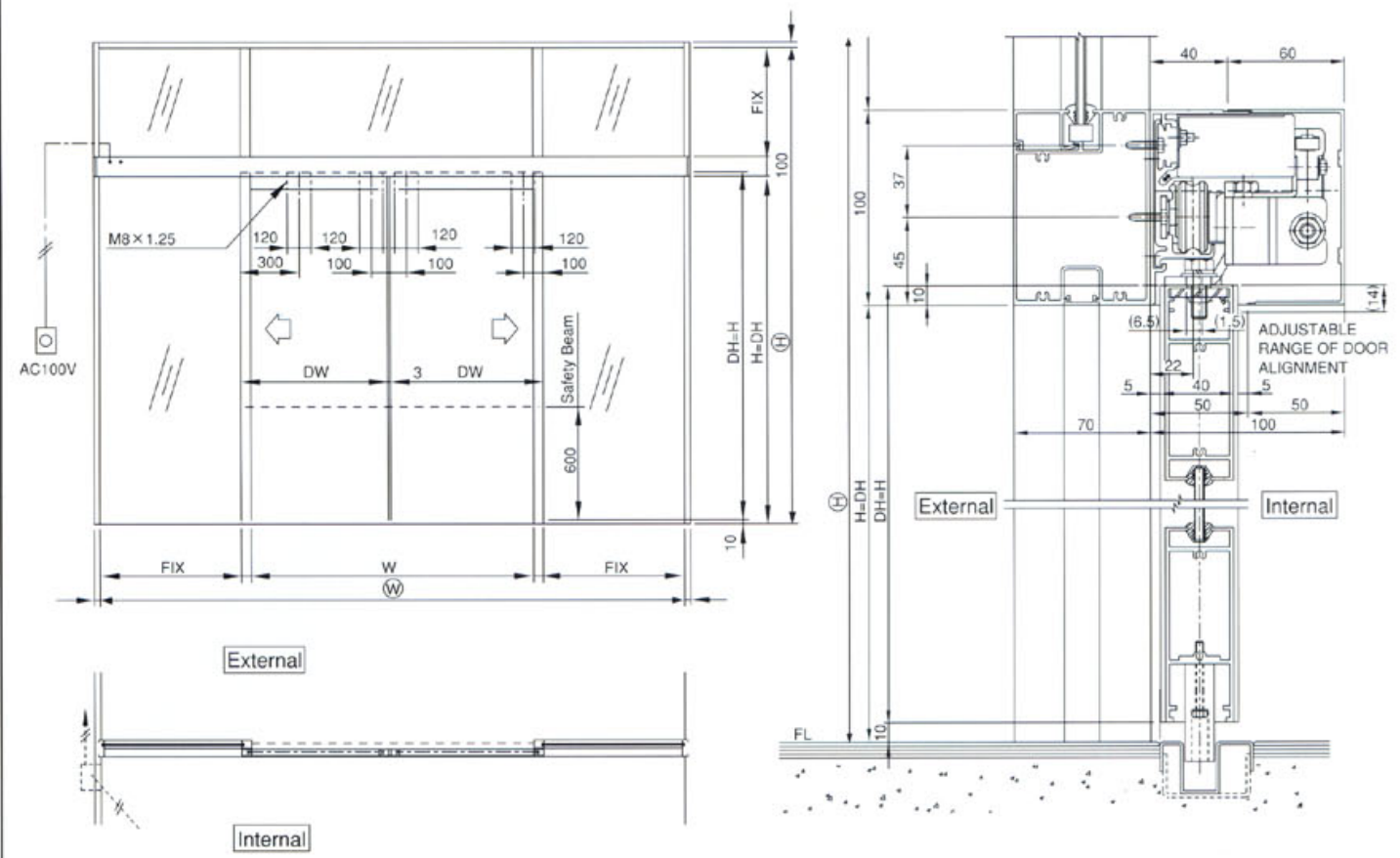
CONCEALED MOUNT (RB TYPE)



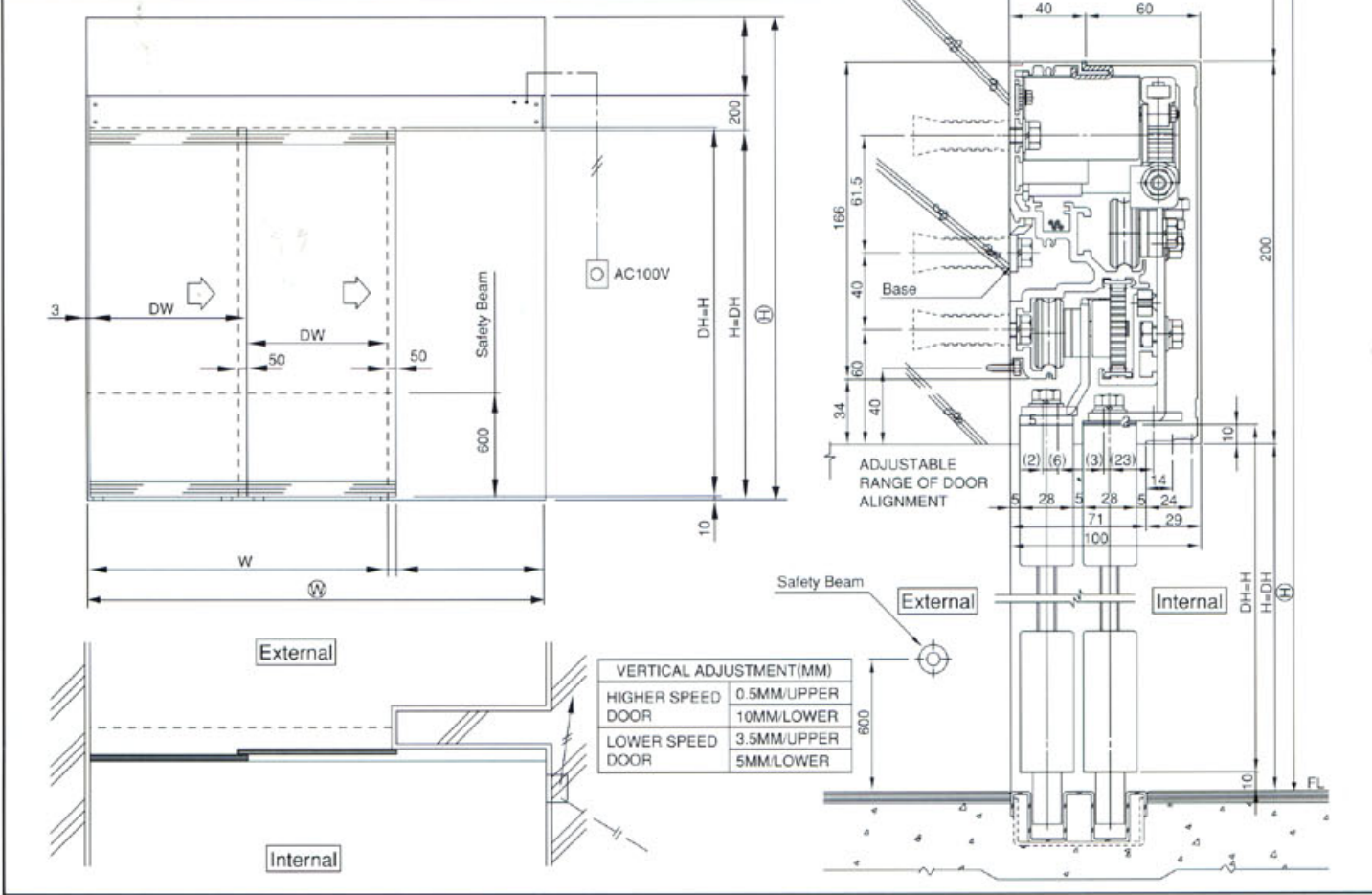
SURFACE MOUNT (RC TYPE)



CONCEALED MOUNT(RE TYPE)



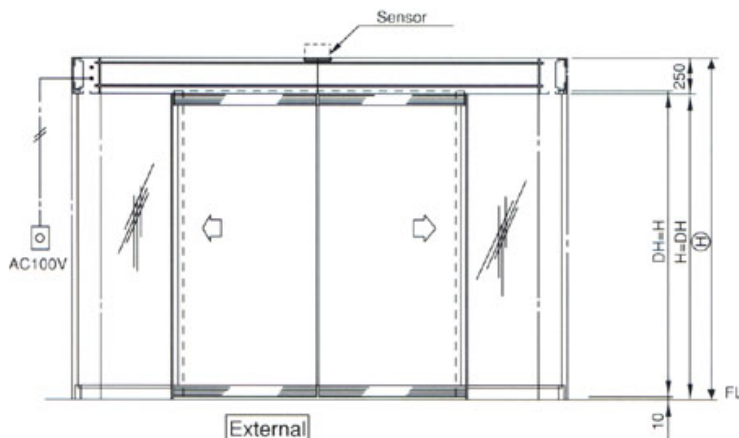
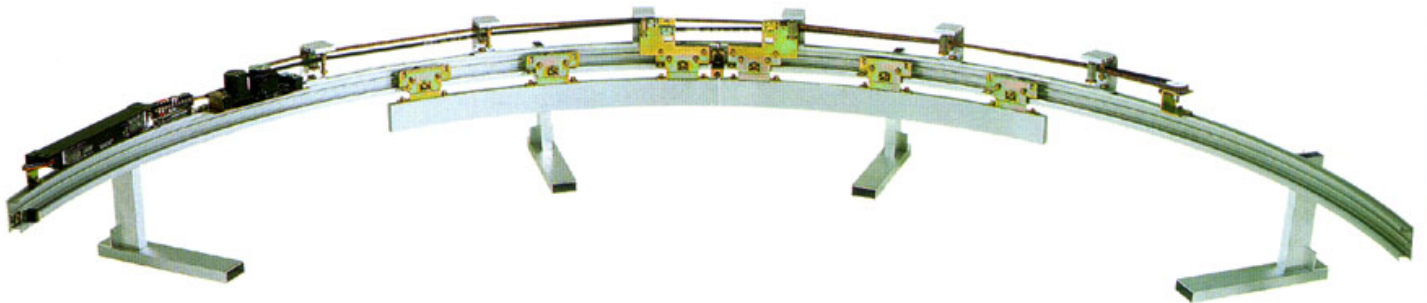
DOUBLE SLIDING / TELESCOPIA DOOR(RN TYPE)



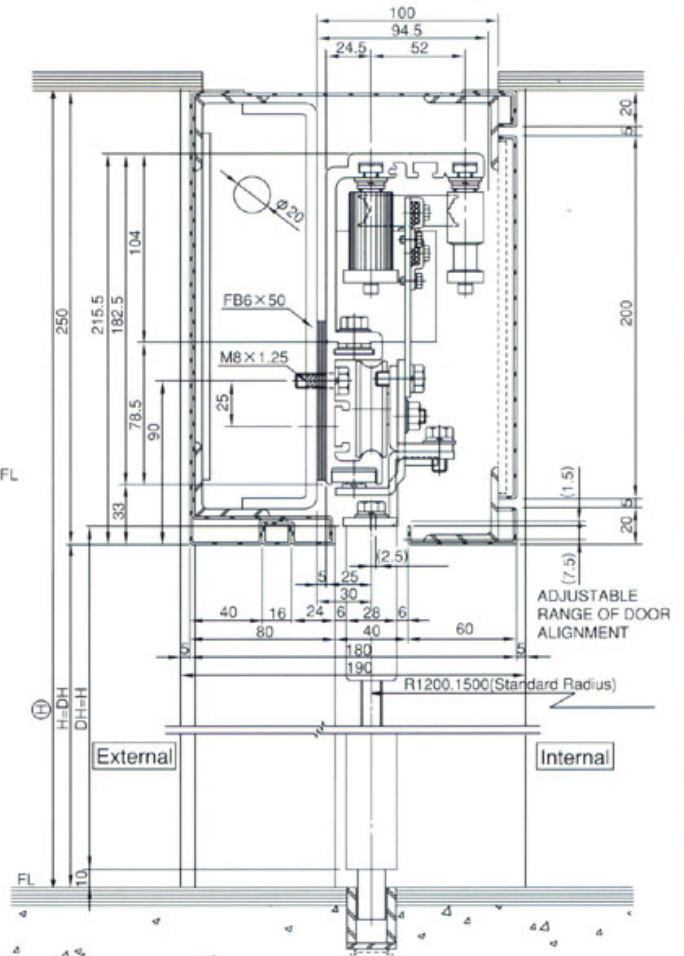
AUTOMATIC DOOR OPERATOR

INSTALLATION DRAWING

ROUND DOOR (RR TYPE-INSTALLTION OF STANDARD BENT)

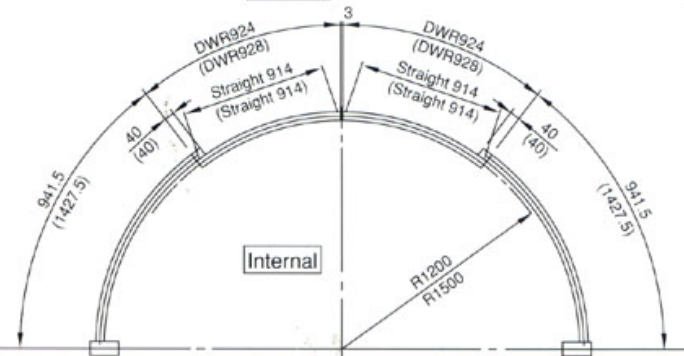


External



External

Internal



Internal

- Standard radius is 1200/1500MM.
- Other dimensions in radius is available at option.

● EXAMPLE LAYOUT

